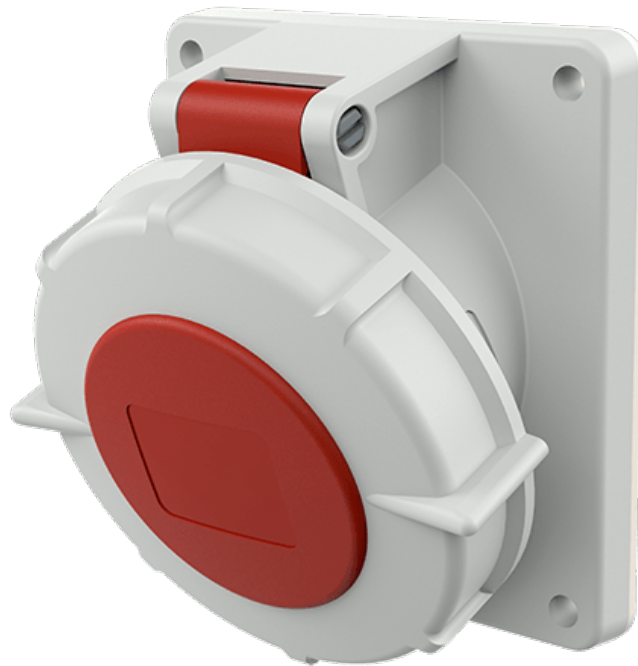


# Panel mounted receptacle

Part number: 1506



**MENNEKES**  
Elektrotechnik GmbH & Co. KG

Aloys-Mennekes-Straße 1  
57399 Kirchhundem  
GERMANY

# Product Description

- screw connection technology
- 20° inclination
- receptacle is designed for adding an auxiliary contact switch

# Technical Details

| Panel mounted receptacle  | 1506                  |
|---|-----------------------|
| Ampere  | 32A                   |
| Number of poles   | 4p                    |
| Clock position  | 6h                    |
| Nominal voltage AC  | 400V                  |
| Nominal frequency   | 50 - 60 Hz            |
| Protection type IP  | IP67                  |
| Contact carrier   | standard              |
| X-CONTACT   | no                    |
| Connection  | screw terminals       |
| Contact screw drive   | PZ2, slot             |
| Pilot contact   | without pilot contact |
| Pilot contact switch  | no                    |
| Flange dimensions   | 100 x 92 mm           |
| Hole spacings   | 85 x 77 mm            |
| Insertion direction   | angled                |
| Inclination   | 20°                   |
| Highly resistant to chemicals   | no                    |
| Military version  | no                    |
| Tightening torque connection terminal for cable cross-section 1,0 - 1,5 mm <sup>2</sup> | 0.6 Nm                |
| Tightening torque connection terminal for cable cross-section 2,5 - 4,0 mm <sup>2</sup> | 0.8 Nm                |
| Tightening torque connection terminal for cable cross-section 6 - 10 mm <sup>2</sup>    | 1.2 Nm                |
| Strip length PH + N flexible conductor  | 12 - 17 mm            |
| Strip length PE flexible conductor  | 12 - 17 mm            |
| Strip length PH + N solid conductor   | 12 - 17 mm            |

|                                 |                     |
|---------------------------------|---------------------|
| Panel mounted receptacle        | 1506                |
| Strip length PE solid conductor | 12 - 17 mm          |
| Conductor cross-section min.    | 2.5 mm <sup>2</sup> |
| Conductor cross-section max.    | 10 mm <sup>2</sup>  |
| Weight (net)                    | 291 g               |
| Packaging unit                  | 10 pcs              |
| Quantity per pallet             | 660 pcs             |
| EAN / identification number     | 4015394011729       |

Permissible ambient conditions

|                                   | Min.   | Max.  |
|-----------------------------------|--------|-------|
| Permissible ambient temperature   | -25 °C | 40 °C |
| Average temperature over 24 hours |        | 35 °C |

Material properties

|            |   |
|------------|---|
| Housing    | PA6 light grey [similar RAL 7035]       |
| Hinged lid | PA6 red [similar RAL 3013]              |
|            | TPE black [similar RAL 9005]            |
|            | PBT/PC squirrel grey [similar RAL 7000] |

Material resistance

The material resistance overview can be found on the website in the section “Knowledge” - “Product knowledge” - “Materials”.

Material and environmental properties

|                                   |    |
|-----------------------------------|----|
| RoHS 2011/65/EU incl. 2015/863/EU | ✓  |
| POP regulation (EU) 2019/1021     | ✓  |
| Halogen-free                      | no |

Regulations and Standards

|                           |                              |
|---------------------------|------------------------------|
| Norm                      | DIN EN IEC 60309-2           |
| Declaration of Conformity | CE                           |
| Test label                | CB Zertifikat, VDE, EAC, CQC |

# Dimensional Drawing



| Drawing<br>1 MB 251   | Amp.<br>Poles | 16        |           |           | 32         |            |            |
|---|---------------|-----------|-----------|-----------|------------|------------|------------|
|   |               | 3         | 4         | 5         | 3          | 4          | 5          |
| Dim. in mm  | a             | 73.5      | 100       | 100       | 100        | 100        | 100        |
|   | b             | 64        | 92        | 92        | 92         | 92         | 92         |
|   | c             | 52        | 60        | 62        | 64         | 64         | 66         |
|   | d             | 60        | 85        | 85        | 85         | 85         | 85         |
|   | e             | 52        | 77        | 77        | 77         | 77         | 77         |
|   | f             | 5.5       | 5.5       | 5.5       | 5.5        | 5.5        | 5.5        |
|   | g             | 8         | 8         | 8         | 8          | 8          | 8          |
|   | g.1           | 2         | 2         | 2         | 2          | 2          | 2          |
|   | h             | 84        | 100       | 105       | 109        | 109        | 113        |
|   | i             | 78        | 85        | 96        | 103        | 103        | 110        |
|   | k             | 43        | 32        | 32        | 53         | 53         | 45         |
|   | l             | 52        | 55        | 65        | 67         | 67         | 72         |
|   | l1            | 60        | 63        | 72        | 82         | 82         | 85         |
|   | α             | 20°       | 20°       | 20°       | 20°        | 20°        | 20°        |
| Terminal for cond. cross section (mm <sup>2</sup> ) min.-max. |               | 1.5<br>—4 | 1.5<br>—4 | 1.5<br>—4 | 2.5<br>—10 | 2.5<br>—10 | 2.5<br>—10 |